

Courtesy Of Kelly O'Connor Of RE/MAX Elite

\$93,000 - 1002 9730 106 Street, Edmonton

MLS® #E4450715

\$93,000

1 Bedroom, 1.00 Bathroom, 459 sqft
Condo / Townhouse on 0.00 Acres

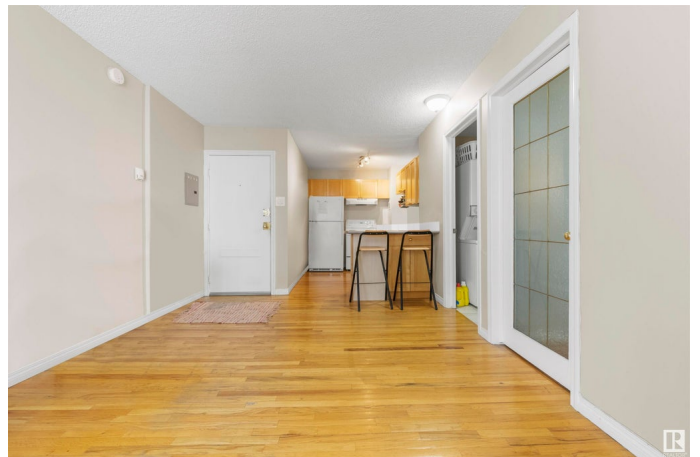
Downtown (Edmonton), Edmonton, AB

Beautiful View of the Parliament Building..This condo offers the Best view in the building.. being on the Top floor, filling the space with natural light and showcasing its bright, beautiful charm. Though compact ,it's thoughtfully designed to feel cozy and welcoming.. The price and location can't be beat on this one!! Quiet-concrete building next to the Parliament and LRT, minutes to U of A., Grant MacEwan , Rogers place and River Valley trails all nearby.This one Bedroom unit in the heart of downtown, features a full 4 piece bathroom, 5 appliances, in-suite laundry, complete with hardwood and ceramic tile flooring also parkade parking, 24 hour surveillance, digital key fob access. Low condo fees include all utilities, heat, water and power. A must see property!! Opportunity to join the managed rental pool for an easy hands off investment.Currently occupied by a great long-term tenant it's an excellent opportunity for both investors and future homeowners... Don't wait and miss out on this gem.

Built in 1966

Essential Information

MLS® #	E4450715
Price	\$93,000
Bedrooms	1



Bathrooms	1.00
Full Baths	1
Square Footage	459
Acres	0.00
Year Built	1966
Type	Condo / Townhouse
Sub-Type	Apartment High Rise
Style	Single Level Apartment
Status	Active

Community Information

Address	1002 9730 106 Street
Area	Edmonton
Subdivision	Downtown (Edmonton)
City	Edmonton
County	ALBERTA
Province	AB
Postal Code	T5K 1B7

Amenities

Amenities	Parking-Visitor, Secured Parking, Security Door
Parking	Stall

Interior

Appliances	Dishwasher-Built-In, Dryer, Refrigerator, Stove-Electric, Washer, Window Coverings
Heating	Hot Water, Natural Gas
# of Stories	11
Stories	1
Has Basement	Yes
Basement	None, No Basement

Exterior

Exterior	Concrete
Exterior Features	Landscaped, Park/Reserve, Picnic Area, Playground Nearby, Public Swimming Pool, Public Transportation, Schools, Shopping Nearby
Roof	Tar & Gravel
Construction	Concrete
Foundation	Concrete Perimeter

Additional Information

Date Listed	July 31st, 2025
Days on Market	82
Zoning	Zone 12
Condo Fee	\$566

DATA IS DEEMED RELIABLE BUT IS NOT GUARANTEED ACCURATE BY THE REALTORS® ASSOCIATION OF EDMONTON. COPYRIGHT 2025 BY THE REALTORS® ASSOCIATION OF EDMONTON. ALL RIGHTS RESERVED. Trademarks are owned or controlled by the Canadian Real Estate Association (CREA) and identify real estate professionals who are members of CREA (REALTOR®, REALTORS®) and/or the quality of services they provide (MLS®, Multiple Listing Service®)

Listing information last updated on October 21st, 2025 at 9:32am MDT