

## \$519,900 - 64 Bellevue Crescent, St. Albert

MLS® #E4443240

**\$519,900**

4 Bedroom, 3.00 Bathroom, 1,292 sqft

Single Family on 0.00 Acres

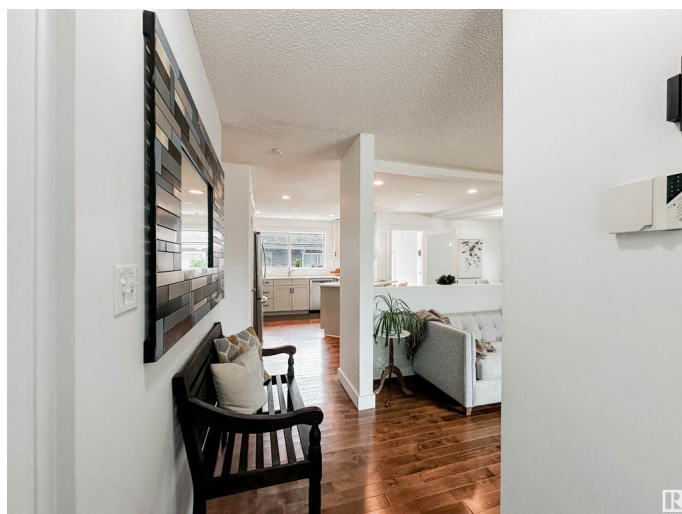
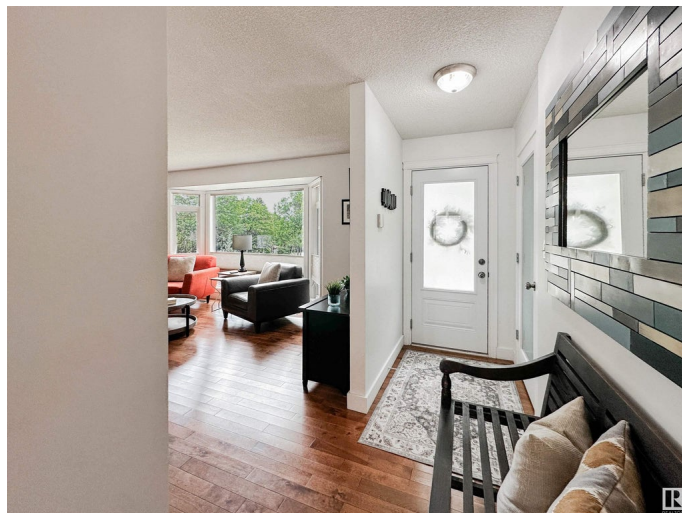
Braeside, St. Albert, AB

Beautifully renovated FF bungalow on a picturesque tree line street! This charming bungalow offers 4 bedrooms, 3 full bathrooms, FF basement, stunning curb appeal, rv parking & a double heated O/S garage. The open concept main floor features a charming living room w/ gleaming hardwood floors, brick decor fireplace, large windows adding tones of natural light, a renovated kitchen w/ upgraded cabinetry, SS appls, quartz countertops, eat up countertop & pantry! The spacious primary offers a renovated 3pc ensuite & closet space!! The main floor is complete with a 4pc bath & 2 more bedrooms. The F/F basement has a large family room, den, 3pc bathroom, 4th bedroom, & laundry. Backyard is ready for summer in your private yard w/ patio space, maintenance free fencing, shed & beautifully landscaping!! Updates include AC, Furnace, HWT, roof, flooring, paint, trim, doors the list goes on!!!

Built in 1971

### Essential Information

MLS® #	E4443240
Price	\$519,900
Bedrooms	4
Bathrooms	3.00
Full Baths	3



Square Footage	1,292
Acres	0.00
Year Built	1971
Type	Single Family
Sub-Type	Detached Single Family
Style	Bungalow
Status	Active

### Community Information

Address	64 Bellevue Crescent
Area	St. Albert
Subdivision	Braeside
City	St. Albert
County	ALBERTA
Province	AB
Postal Code	T8N 0A6

### Amenities

Amenities	Air Conditioner, Patio, See Remarks
Parking	Double Garage Detached, Heated

### Interior

Interior Features	ensuite bathroom
Appliances	Air Conditioning-Central, Dishwasher-Built-In, Dryer, Garage Control, Garage Opener, Hood Fan, Oven-Microwave, Refrigerator, Storage Shed, Stove-Electric, Washer, Window Coverings, TV Wall Mount, Garage Heater
Heating	Forced Air-1, Natural Gas
Fireplace	Yes
Fireplaces	Stone Facing
Stories	1
Has Basement	Yes
Basement	Full, Finished

### Exterior

Exterior	Wood, Metal
Exterior Features	Corner Lot, Fenced, Landscaped, Playground Nearby, Public Transportation, Schools, Shopping Nearby, See Remarks
Roof	Asphalt Shingles

Construction	Wood, Metal
Foundation	Concrete Perimeter

**Additional Information**

Date Listed	June 19th, 2025
Days on Market	5
Zoning	Zone 24

DATA IS DEEMED RELIABLE BUT IS NOT GUARANTEED ACCURATE BY THE REALTORS® ASSOCIATION OF EDMONTON. COPYRIGHT 2025 BY THE REALTORS® ASSOCIATION OF EDMONTON. ALL RIGHTS RESERVED.Trademarks are owned or controlled by the Canadian Real Estate Association (CREA) and identify real estate professionals who are members of CREA (REALTOR®, REALTORS®) and/or the quality of services they provide (MLS®, Multiple Listing Service®)

Listing information last updated on June 24th, 2025 at 7:47am MDT